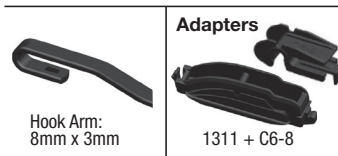


BARDAHL Universal Beam Blade Installation Instructions

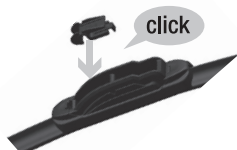
Hook Arm 8x3



- 1 Remove pre-installed inner adapter "2012" from adapter "1311"



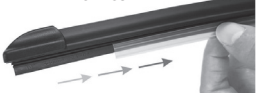
- 2 Install adapter "C6-8" on adapter "1311". Press down until clicks in position.



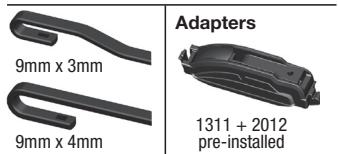
- 3 Install arm & review it is locked in position.



- 4 REMOVE PLASTIC COVER FROM BLADE BEFORE USE



Hook Arms 9x3 9x4



- 1 Adapters "1311+2012" come pre-installed



- 2 Open cover & install Hook Arm 9mm x 3mm or 9mm x 4mm



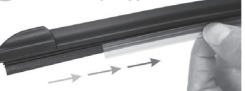
- 3 Click in position & close the cover



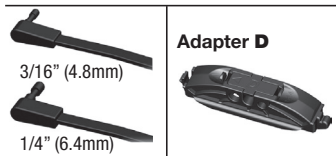
- 4 Review arm is locked in position



- 5 REMOVE PLASTIC COVER FROM BLADE BEFORE USE



Side Pin Arms



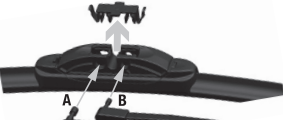
- 1 Remove pre-installed adapters "1311+2012" from wiper. Press the clip tight to the right, then pull up the adapter from the base



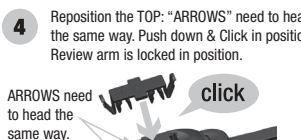
- 2 Install adapter "D" on the base. 1. Insert the convex into the slot. 2. Press down the adapter until it snaps into place



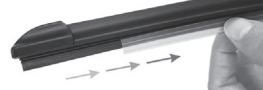
- 3 Remove the TOP of the adapter "D" pressing side tabs. Install the Side Pin arm using the appropriate hole.



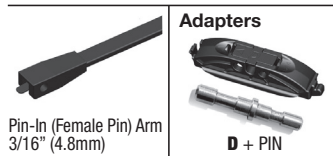
- 4 Reposition the TOP: "ARROWS" need to head the same way. Push down & Click in position. Review arm is locked in position.



- 5 REMOVE PLASTIC COVER FROM BLADE BEFORE USE



Pin-In Arm



- 1 Remove pre-installed adapters "1311+2012" from wiper. Press the clip tight to the right, then pull up the adapter from the base



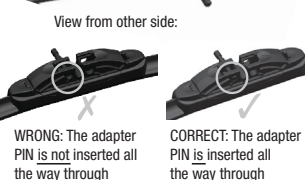
- 2 Install adapter "D" on the base. 1. Insert the convex into the slot. 2. Press down the adapter until it snaps into place



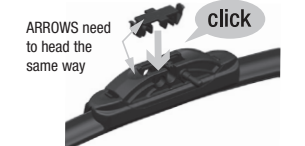
- 3 Remove the TOP of the adapter "D" pressing side tabs.



- 4 Insert the longer side of the PIN in the hole close to "1314" code. The inserted PIN should reach all the way to the other side



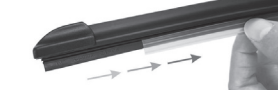
- 5 Reposition the TOP: "ARROWS" need to head the same way. Push down & Click in position. Review pin is secure.



- 6 Install the 3/16" (4.8mm) PIN-IN arm on the PIN adapter. Push & Click in position. Review arm is locked in position.



- 7 REMOVE PLASTIC COVER FROM BLADE BEFORE USE



OE Side Pin Arms



- 1 Remove pre-installed adapters "1311+2012". Press the clip tight to the right, then pull up the adapter from the base



- 2 Install adapter "C or 1313" on the base. 1. Insert the convex into the slot. 2. Press down the adapter until it snaps into place



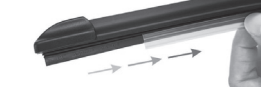
- 3 Turn at 90 degree angle and insert pin of the arm into the hole on the adapter. Rotate until arm TAB lays flat on the top of the adapter



- 4 Review arm is locked in position.



- 5 REMOVE PLASTIC COVER FROM BLADE BEFORE USE



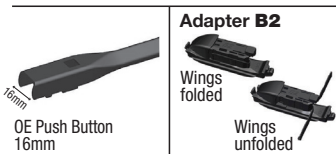
The Leading Edge™
Bardahl MFG. Seattle, USA



Full Installation Instructions also
available by scanning QR Code above
or visiting Bardahlwipers.com

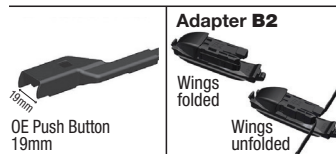
BARDAHL Universal Beam Blade Installation Instructions

OE Push Button 16mm



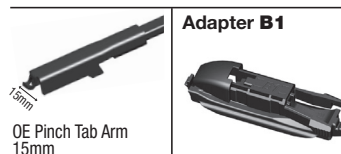
- 1 Remove pre-installed adapters "1311+2012" from wiper.
Press the clip tight to the right, then pull up the adapter from the base.
- 2 Install adapter "B2" on the base.
1. Insert the convex into the slot.
2. Press down the adapter until it snaps into place.
- 3 Unfold the "WINGS"
- 4 Brake-off the "WINGS" and dispose them
- 5 Slide the arm onto the adapter
- 6 Review arm is locked in position.
- 7 REMOVE PLASTIC COVER FROM BLADE BEFORE USE

OE Push Button 19mm



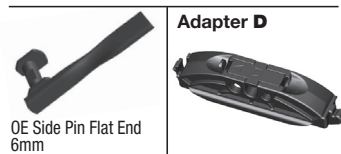
- 1 Remove pre-installed adapters "1311+2012" from wiper.
Press the clip tight to the right, then pull up the adapter from the base.
- 2 Install adapter "B2" on the base.
1. Insert the convex into the slot.
2. Press down the adapter until it snaps into place.
- 3 Slide the arm onto the adapter
- 4 Review arm is locked in position.
- 5 REMOVE PLASTIC COVER FROM BLADE BEFORE USE

OE Pinch Tab



- 1 Remove pre-installed adapters "1311+2012" from wiper.
Press the clip tight to the right, then pull up the adapter from the base.
- 2 Install adapter "B1" on the base.
1. Insert the convex into the slot.
2. Press down the adapter until it snaps into place.
- 3 Install OE Pinch Tab Arm
- 4 Review arm is locked in position.
- 5 REMOVE PLASTIC COVER FROM BLADE BEFORE USE

OE Side Pin Flat End



- 1 Remove pre-installed adapters "1311+2012" from wiper.
Press the clip tight to the right, then pull up the adapter from the base.
- 2 Install adapter "D" on the base.
1. Insert the convex into the slot.
2. Press down the adapter until it snaps into place.
- 3 Remove the TOP of adapter "D" pressing side tabs.
- 4 Insert the arm in the center hole and turn to the side
- 5 Reposition the TOP: "ARROWS" need to head the same way. Push down & Click in position
- 6 Review arm is locked in position.
- 7 REMOVE PLASTIC COVER FROM BLADE BEFORE USE



The Leading Edge™
Bardahl MFG. Seattle, USA



Full Installation Instructions also
available by scanning QR Code above
or visiting Bardahlwipers.com